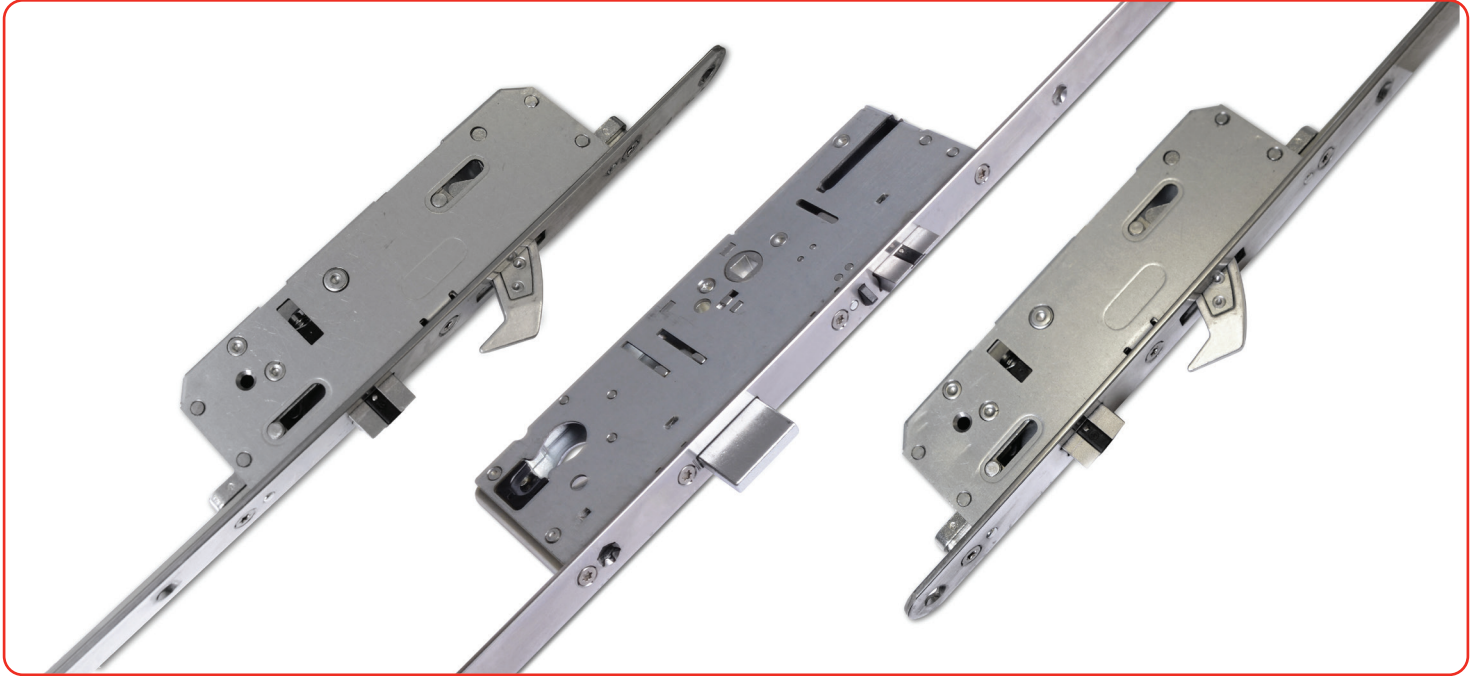
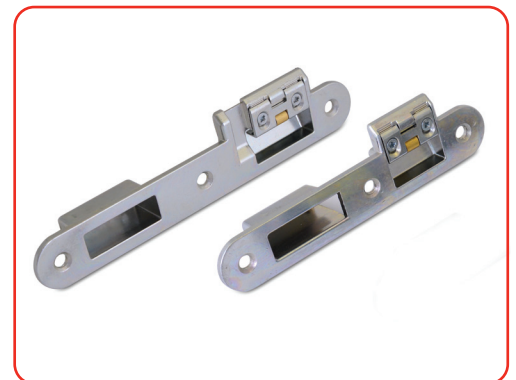


### SureFire Classic 2 Hook Multi-Point Door Lock



## Features

- Shutting the door engages the trigger and fires all five locking points into the keeps and then using the key the centre deadbolt can be thrown. To release, simply turn the key
- Unidirectional throw of hooks – enhanced anti-jimmy feature
- Twin tapered anti-jimmy hooks designed for high performance and security have anti-saw protection and hardened anti-drill inserts. Hooks will auto deadlock once activated for anti-separation resistance – 10mm (maximum) engagement into keep
- Manufactured from lightweight aluminium used within the aerospace industry, these hooks have been designed with lighter torque (0.8-1Nm) to ensure key operation is smooth and easy to turn
- Manufactured from injection moulded hardened Stainless Steel, the Latch Bolts have been designed to ensure the door is in the correct position before hooks engage into keeps and to prevent any side load pressure on the hooks during any normal lock operation
- Deadbolt throws 20mm to prevent unauthorised entry and has PTFE (plastic) lead to support low effort release
- Auto Fire trigger – angled for non-handing positioned below the Latch Bolt. Manufactured from Stainless Steel
- Steel reversible pull and twist or rear screw driver push and turn Latch Bolts for a non-handed lock mechanism
- Available as 35mm and 45mm Backsets with a 20mm face bar in either a square end or a round end
- Accepts standard 92mm unsprung handles. Universal lock that is compatible with a standard Euro Cylinder or ERA Invincible cylinder. Lugs on the gearbox convert from a euro cylinder to Invincible shape
- Designed to meet the requirements of PAS 24 as part of a compliant door system, and BS 6375
- Keeps to suit both timber and composite doors



Keeps

### SureFire Classic 2 Hook Multi-Point Door Lock

#### Ordering Details

##### KEY

To select the required 2 hook MPL part number, use the below to determine:

<b>B</b> Backset	<b>OL</b> Overall Length
<b>FB</b> Face Bar	<b>TH</b> Top Hook
<b>DL</b> Datum Line	<b>BH</b> Bottom Hook

1. The face bar and backset
2. The overall length of the unit
3. The position of the hooks

##### SQUARE END

B	FB	DL	OL	TH	BH	Part No.
35	20	977	2137	715	680	DLSF-35-604-85
45	"	"	"	"	"	DLSF-45-604-85

##### ROUND END

B	FB	DL	OL	TH	BH	Part No.
35	20	788	1634	715	680	DLSF-35-609-85
45	"	"	"	"	"	DLSF-45-609-85

##### KEEPS

Description	Timber, Non-Fire (Zinc)	Composite & Timber, Fire (Steel)
Centre Keep Left Hand	DKSFCKL0044	DKSFCKL23487*
Centre Keep Right Hand	DKSFCKR0044	DKSFCKR23488*
Hook Keep Left Hand	DKSFHKL0044	DKSFHKL23489*
Hook Keep Right Hand	DKSFHKL0044	DKSFHKL23490*
Flat Centre Keep Left Hand		DKSFHKL31738*
Flat Centre Keep Right Hand		DKSFHKL31737*
Flat Hook Keep Left Hand		DKSFHKL31739*
Flat Hook Keep Right Hand		DKSFHKL31740*
Motor	DLSF-MOTOR-12V	

#### Technical Information

##### Corrosion resistance

Meets the requirements of BS EN 1670:2007 Grade 4 (240 hours)

##### Operation

Endurance tested in excess of 150,000 cycles

##### Performance

Tested to meet the requirements of PAS 24 as part of a compliant door set. Fire test to BS 476 FD30 and FD60, and EN 1634 FD30.

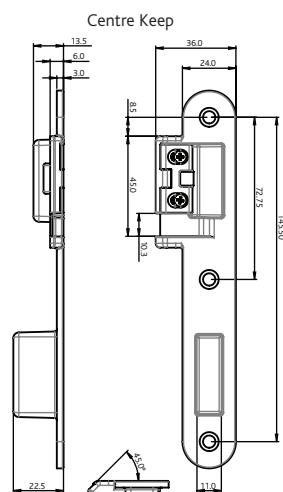
\*Suitable for fire door applications in appropriate door assemblies, subject to approval by an accredited and authorised third party organisation.

#### Material Specification

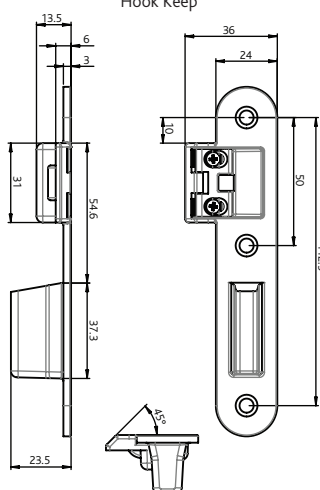
Lock case:	BZP CR3 Passivate + Seal
Face bar:	Stainless Steel 430
Hooks:	Aluminium anodised 2A50-T6
Deadbolt:	Zinc CR3 Passivate + Seal, PTFE insert
Latch Bolts:	Stainless Steel 304
Trigger:	Stainless Steel
Keeps:	Zinc with Brass roller

#### Maintenance

All moving parts should be lightly lubricated using a light non-acidic mineral oil (e.g. "3 in 1") twice per year and the surface cleaned with a soft damp cloth. The product may need to be adjusted and fixings tightened to ensure a satisfactory operation.



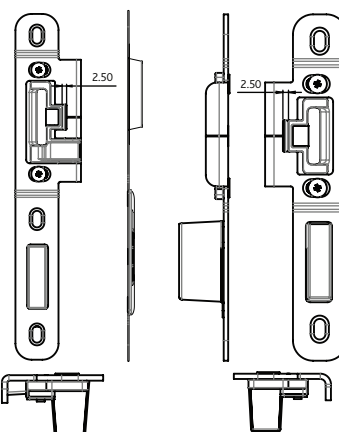
Centre Keep



Hook Keep

Flat Centre Keep

Flat Hook Keep



SureFire Classic Multi-Point Door Lock

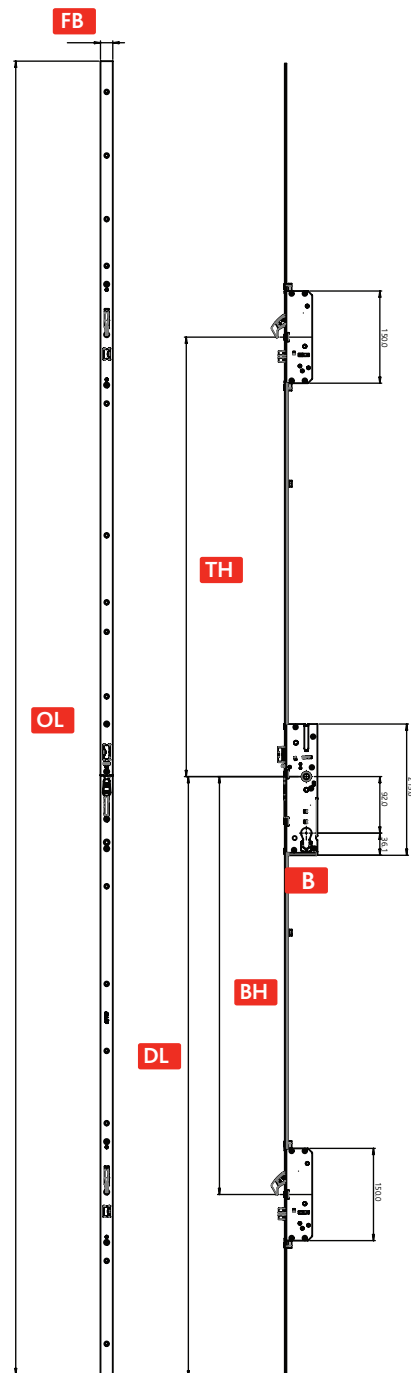


Diagram illustrates product in locked position. Not to scale. All dimensions are in mm and are nominal. ERA reserves the right to change specification without notice. It is the responsibility of the door manufacturer to ensure that the finished product meets any required safety and performance specification.

#### Packaging

Locks: 5 locks per box

Keeps: 50 keeps per box